

2020

SOCCER
SPRING/FALL 2020 COLLECTION

e
ELETTO

OUR STORY



ELETTO was formed in 2000 by passionate Canadian soccer entrepreneurs. *Eletto* is an Italian word that derives from the Latin *electus*, which means *elect* or *chosen*, the brand of choice. We incorporated the colours RED and BLACK to symbolize our beliefs and what we stand for. RED symbolizes our passion, desire and love for all we do. BLACK symbolizes the elegance and strength on how we conduct ourselves.

ELETTO has maintained a reputation for outstanding customer service and is known for having cutting edge designs and superior quality. Eletto has grown into a recognized soccer brand in Canada and receives strong support from professional clubs and youth organizations.

SOCCER
WE LOVE THIS GAME.

100+
Club and
Organization
Partnerships

Our inspiration and motivation
come from the athletes
that are determined and driven
to perform at the highest level.

- 07 Teamwear
- 18 GK Apparel
- 20 Custom Uniforms
- 24 Training Apparel
- 35 Bags
- 37 Balls
- 43 Goals
- 45 Equipment and Accessories

- 50 Outdoor Footwear
- 51 Indoor Footwear
- 52 Shinpads
- 53 Sleeves and Kneepads
- 54 GK Gloves
- 56 Referee
- 58 Icon Legend
- 59 Terms and Conditions

INDEX

**SPRING
FALL
2020**

e
ELETTO

ELETTO PARTNERS

SKNFA SKNFA Premier League | ST. KITTS & NEVIS



MASL Major Arena Soccer League | USA





MASL
Major Arena
Soccer League



The Major Arena Soccer League is a North American indoor soccer league representing the highest level of professional arena soccer in the world. The MASL features teams across North America, with teams playing coast-to-coast in the United States, Canada and Mexico.

**FEATURED
PARTNER**



TEAMWEAR

PERFORMANCE TECHNOLOGY



Highly functional mesh venting system allows for optimum air flow keeping you cool.



4 way stretch fabric is designed to work with your body and remain in place no matter what direction you move.



Laser cut engineered mesh system allows for maximum ventilation keeping you cool and dry.



Moisture management materials draw sweat away from your skin and keeps you dry and comfortable.

**BOOKING
PROGRAM**

 ROYAL/WHITE/BLACK
(Col.0162)

 RED/WHITE/BLACK
(Col.0142)

 WHITE/WHITE/BLACK
(Col.0002)

 ROYAL/WHITE/BLACK
(Col.0162)

 BLACK/WHITE
(Col.0101)

 FOREST GRN/WHITE
(Col.0282)

 NAVY/WHITE/BLACK
(Col.0182)

ATLETICO JERSEY
JS-1720

Self fabric collar with double layer. Detailed piping around sleeve, cuff opening, bottom hem and underarms. Rubber logo.

FABRIC | 100% STRETCH POLYESTER · DRY-FORM TECH

FEATURES | DRY-FORM TECHNOLOGY, ENGINEERED MESH · ACTIVE 4 WAY STRETCH FABRIC

SUGGESTED ITEMS | PREMIER SHORTS, MATRIX SOCKS



SLIM FIT		PRO FIT		RELAXED FIT	
		YM	YL	YXL	
S	M	L	XL	XXL	

 SR MSRP **\$39.99** | JR MSRP **\$39.99**


BOOKING PROGRAM** THIS IS NOT A STOCK PROGRAM AND MINIMUM QUANTITIES ARE REQUIRED. PLEASE CONTACT US FOR MORE DETAILS.



RED/WHITE
(Col.0142)



WHITE/RED
(Col.0122)



ROYAL/WHITE
(Col.0162)



ORANGE/BLACK
(Col.0261)



CLASSIC NAVY/WHITE
(Col.0182)



BLACK/WHITE
(Col.0101)



WHITE/WHITE
(Col.0002)



GOLD/BLACK
(Col.0221)



FOREST/WHITE
(Col.0282)

LEEDS JERSEY
JS-1411

Self fabric v-neck with double layer. Detailed piping around sleeve, cuff opening, bottom hem and underarms. Perforated mesh inserts strategically placed under arms for ventilation. Embroidered logo.

FABRIC | 100% LIGHTWEIGHT POLYESTER INTERLOCK

FEATURES | DRY-FORM TECHNOLOGY

SUGGESTED ITEMS | PREMIER SHORTS, MATRIX SOCKS



SLIM FIT		PRO FIT		RELAXED FIT	
	YS	YM	YL	YXL	
S	M	L	XL	XXL	

SR MSRP **\$33.99** | JR MSRP **\$31.99**

ELETTO**MATCH DAY JERSEY****CITY JERSEY****NEW
PRODUCT**RED/WHITE
(Col.0302)ROYAL/WHITE
(Col.0402)DARK NAVY/WHITE
(Col.3402)SKY BLUE/WHITE
(Col.2402)BLACK/WHITE
(Col.0102)FOREST/WHITE
(Col.0702)GREY/BLACK
(Col.2101)KELLY/WHITE
(Col.1702)ORANGE/BLACK
(Col.0601)GOLD/BLACK
(Col.1501)WHITE/WHITE/BLACK
(Col.020201)**CITY JERSEY****JS-2011**

Single rib V-neck collar. Contrast sleeve color. Mesh inserts on upper chest and sides. Elettto rubber logo.

FABRIC | 100% LIGHTWEIGHT POLYESTER INTERLOCK**FEATURES** | MESH INSERTS ON FRONT UPPER CHEST AND SIDES**SUGGESTED ITEMS** | OSLO SHORTS, MATRIX SOCKS

SLIM FIT		PRO FIT		RELAXED FIT	
	YS	YM	YL	YXL	
S	M	L	XL	XXL	

SR MSRP **\$29.95** | JR MSRP **\$28.95**

ELETTO**MATCH DAY JERSEY****MANCHESTER**FOREST/WHITE
(Col.0282)WHITE/FOREST
(Col.0129)WHITE/ROYAL
(Col.0123)WHITE/RED
(Col.0122)WHITE/DARK NAVY
(Col.0140)WHITE/BLACK
(Col.0121)TEAL/WHITE
(Col.0362)ROYAL/WHITE
(Col.0162)RED/WHITE
(Col.0142)DARK NAVY/WHITE
(Col.0602)BLACK/WHITE
(Col.0101)KELLY GRN/WHITE
(Col.0302)ORANGE/BLACK
(Col.0261)GREY/BLACK
(Col.0441)GOLD/ROYAL
(Col.0224)SKY BLUE/NAVY
(Col.0205)BURGUNDY/WHITE
(Col.0342)**MANCHESTER JERSEY****JS-1560**

Single self fabric V-neck. Contrast sleeve color. Drop stripe on right shoulder.
Rib finishing on sleeves and bottom hem. Eletto rubber logo.

FABRIC | 100% LIGHTWEIGHT POLYESTER INTERLOCK**FEATURES** | PIPING FINISH ON SLEEVES AND BOTTOM HEM**SUGGESTED ITEMS** | OSLO SHORTS, MATRIX SOCKS

SLIM FIT

PRO FIT

RELAXED FIT

YXS

YS

YM

YL

YXL

S

M

L

XL

XXL

SR MSRP **\$27.99** | JR MSRP **\$26.99**

ELETTO**MATCH DAY JERSEY****DEPORTIVO**

SKYBLUE/WHITE
(Col.0202)



NEON YELLOW/BLACK
(Col.0581)



NEON BLUE/WHITE
(Col.0588)



MAGENTA/WHITE
(Col.1170)



TEAL/ WHITE
(Col.0362)



ORANGE/WHITE
(Col.0262)



RED/WHITE
(Col.0142)



WHITE/WHITE/GREY
(Col.0002)



ROYAL/WHITE
(Col.0162)



DARK NAVY/WHITE
(Col.0602)



GREY/WHITE
(Col.0442)



GOLD/BLACK
(Col.0221)



KELLY/ WHITE
(Col.0302)



FOREST/WHITE
(Col.0282)



BLACK/WHITE
(Col.0101)



BURGUNDY/WHITE
(Col.0342)

DEPORTIVO JERSEY**JS-1900**

2 Tone V-neck collar. Contrast cuff color. Stripe across centre in front. Bottom hem finishing. Elettto logo.

FABRIC | 100% LIGHTWEIGHT POLYESTER INTERLOCK

FEATURES | PRO FINISH COLLAR AND FINISHED DETAILS

SUGGESTED ITEMS | OSLO SHORTS, MATRIX SOCKS

SLIM FIT

PRO FIT

RELAXED FIT

YXS

YS

YM

YL

S

M

L

XL

SR MSRP **\$26.99** | JR MSRP **\$24.99**



GOLD/BLACK
(Col.0221)



NEON YELLOW/BLACK
(Col.0581)



MAGENTA/BLACK
(Col.1171)



NEON BLUE/BLACK
(Col.0587)



NEON GREEN/BLACK
(Col.1110)



NEON PURPLE/WHITE
(Col.1172)



ROYAL/WHITE
(Col.0162)



RED/WHITE
(Col.0142)



TEAL/WHITE
(Col.0362)



BURGUNDY/NEON BLUE
(Col.0360)



LAVA ORANGE/BLACK
(Col.1130)



BLACK/WHITE
(Col.0101)



WHITE/WHITE
(Col.0002)



FOREST GREEN/WHITE
(Col.0282)



SILVER/WHITE
(Col.0462)



DARK NAVY/WHITE
(Col.0602)

VALENCIA JERSEY
JS-1710

Self fabric V-neck collar. Contrast panel across right should. Piping on bottom jersey hem. Embroidered logo on right chest.

FABRIC | 100% PLAIN POLYESTER

SUGGESTED ITEMS | ATHENS SHORTS, PRAGUE SHORTS, MAIN SOCKS

SLIM FIT

PRO FIT

RELAXED FIT

YXS

YS

YM

YL

S

M

L

XL

XXL

SR MSRP **\$22.99** | JR MSRP **\$21.99**

COMPLETE ONE-STOP SERVICE



COMPLETE ONE-STOP SERVICE

COMPLETE YOUR **ELETTO** PRODUCTS
ACCORDING TO YOUR TEAM WISHES.
CONTACT **ELETTO** OR YOUR **LOCAL DEALER** FOR
A COMPLETE OVERVIEW OF OUR SERVICE.


 WHITE/BLACK
(Col.0121)

 BLACK/BLACK/WHITE
(Col.0101)

 DARK NAVY/WHITE
(Col.0602)

 ROYAL/WHITE
(Col.0162)

 RED/WHITE
(Col.0142)

PREMIER SHORTS

Lightweight fabric. Mesh panel on side and back. Waistband with cord. 6-inch inseam. Rubber logo.

FABRIC | 100% LIGHTWEIGHT POLYESTER INTERLOCK

ST-1910


	YS	YM	YL	YXL
S	M	L	XL	XXL

 SR MSRP **\$26.99** | JR MSRP **\$25.50**



ROYAL/WHITE
(Col.0162)



DARK NAVY/WHITE
(Col.0602)

FOREST/WHITE
(Col.0282)

RED/WHITE
(Col.0142)

WHITE/WHITE
(Col.0002)

BLACK/WHITE
(Col.0101)

ORANGE/BLACK
(Col.0261)

CLASSIC NAVY/WHITE
(Col.0182)

OSLO SHORTS
ST-1060

Oslo Short, Performance knit short with contrasting piping on front side panel. Draw cord and elasticized waistband. 6" inseam. Embroidered logo. Only Black Short available in YXS.

FABRIC | POLYESTER INTERLOCK SHINY FABRIC

YXS	YS	YM	YL	YXL
S	M	L	XL	XXL

SR MSRP **\$20.99** | JR MSRP **\$19.99**

ATHENS SHORTS
ST-1100


BLACK/WHITE
(Col.0101)

Athens Short, Performance knit short with draw cord and elasticized waistband. 6" inseam. Embroidered logo. Available as small as Y3XS.

FABRIC | 100% PLAIN POLYESTER



Y3XS	Y2XS	YXS	YS	YM	YL	YXL
		S	M	L	XL	XXL

SR MSRP **\$17.50** | JR MSRP **\$15.99**

PRAGUE SHORTS
ST-1099


WHITE/BLACK
(Col.0121)

Prague Short, Performance knit short with slit on both sides. Draw cord and elasticized waistband. 6" inseam. Embroidered logo.

FABRIC | 100% PLAIN POLYESTER



	YS	YM	YL	YXL
S	M	L	XL	XXL

SR MSRP **\$18.50** | JR MSRP **\$16.99**

**BOOKING
PROGRAM**
**NEW
PRODUCT**

 BLACK/WHITE
(Col.0102)

 WHITE/BLACK
(Col.0201)

 RED/WHITE
(Col.0302)

 ROYAL/WHITE
(Col.0402)

 DARK NAVY/WHITE
(Col.3402)

MATCH ELITE SOCK
SC-2001

 XXS
4-6

 XS
5-7

 S
7-9

 M
9-11

 L
10-13

Match Elite Sock is light weight and breathable. Excellent fit and stretch. Heel and forefront cushioning for extra comfort. Arch compression provided a snug fit and better support.

FABRIC | 70% NYLON, 20% SPANDEX, 10% COTTON

SR MSRP **\$14.99** M-L
JR MSRP **\$13.99** S


 ROYAL/WHITE
(Col.0162)

 WHITE/BLACK
(Col.0121)

 FOREST GREEN/WHITE
(Col.0282)

 DARK NAVY/WHITE
(Col.0602)

 BLACK/WHITE
(Col.0101)

 RED/WHITE
(Col.0142)

MATRIX SOCK
SC-2000

 XXS
4-6

 XS
5-7

 S
7-9

 M
9-11

 L
10-13

Matrix sock is lightweight and made in nylon and spandex. Excellent fit and stretch. Elett logo on front shin and cuff. Made for professional play.

FABRIC | 70% NYLON, 20% SPANDEX, 10% COTTON

SR MSRP **\$11.99** M-L
JR MSRP **\$10.99** XS-S



BOOKING PROGRAM THIS IS NOT A STOCK PROGRAM AND MINIMUM QUANTITIES ARE REQUIRED. PLEASE CONTACT US FOR MORE DETAILS.**


 RED/WHITE
(Col.0142)

 WHITE/BLACK
(Col.0121)

 ROYAL/WHITE
(Col.0162)

 CLASSIC NAVY/WHITE
(Col.0182)

 BLACK/WHITE
(Col.0101)

 RED/WHITE
(Col.0142)

MAIN SOCK
SC-2600

Main Sock is lightweight and made in polyester and spandex. Excellent fit and stretch. Eletto logo on front shin.

FABRIC | 70% POLYESTER, 20% SPANDEX, 10% COTTON

 XXS
4-6

 XS
5-7

 S
7-9

 M
9-11

 L
10-13

 SR MSRP **\$7.75** M · L | JR MSRP **\$7.25** XXS · XS · S

 BLACK/WHITE
(Col.0101)

CLASSIC STRIPE
SC-2450

Classic black socks with stripes on top. Elastic support on the ankle, foot and cuff. Lightweight and durable.

FABRIC | 85% POLYESTER, 15% SPANDEX

 XXS
4-6

 XS
5-7

 S
7-9

 M
9-11

 L
10-13

 SR MSRP **\$9.99** M · L | JR MSRP **\$8.99** XS · S

 WHITE
(Col.0002)

CLASSIC PRO
SC-1100

Classic SOLID color socks. Elastic support on the ankle, foot and cuff. Lightweight and durable. Eletto logo on foot.

FABRIC | 85% POLYESTER, 15% SPANDEX

 XXS
4-6

 XS
5-7

 S
7-9

 M
9-11

 L
10-13

 SR MSRP **\$11.99** M · L | JR MSRP **\$10.99** S

 BLACK
(Col.0001)



ORANGE/BLACK
(Col.0601)

**NEW
PRODUCT**

COMBAT GK JERSEY
GK-2000

Goalkeeper jersey with raglan sleeves and self-fabric round collar. Padded elbows for extra protection and ribbed sleeve cuffs. Rubber Eletto logo.

FABRIC | 100% STRETCH POLYESTER

SLIM FIT		PRO FIT		RELAXED FIT	
YXS	YS	YM	YL	YXL	
S	M	L	XL	XXL	

SR MSRP **\$64.99** | JR MSRP **\$59.99**



NEON BLUE/BLACK/
NEON YELLOW
(Col.280148)



NEON YELLOW/BLACK
NEON BLUE
(Col.480128)

**NEW
PRODUCT**

ARMOR GK JERSEY
GK-2008

Goalkeeper jersey with raglan sleeves and self-fabric V-neck collar. Contract upper right panel and sleeve. Padded Elbows for extra protection and piping on sleeve cuffs and hem. Rubber Eletto Logo.

FABRIC | 100% LIGHTWEIGHT POLYESTER

SLIM FIT		PRO FIT		RELAXED FIT	
YXS	YS	YM	YL	YXL	
S	M	L	XL	XXL	

SR MSRP **\$49.95** | JR MSRP **\$44.95**



ORANGE/BLACK
(Col.0261)

OSLO SHORTS
ST-1060

Oslo Short, Performance knit short with contrasting piping on front side panel. Draw cord and elasticized waistband. 6" inseam. Embroidered logo. Only Black Short available in YXS.

FABRIC | POLYESTER INTERLOCK SHINY FABRIC

YXS	YS	YM	YL	YXL
S	M	L	XL	XXL

SR MSRP **\$20.99** | JR MSRP **\$19.99**



ORANGE/BLACK
(Col.0601)

**BOOKING
PROGRAM**

**NEW
PRODUCT**

MATRIX SOCK
SC-2000

Matrix sock is lightweight and made in nylon and spandex. Excellent fit and stretch. Eletto logo on front shin and cuff. Made for professional play.

FABRIC | 70% NYLON, 20% SPANDEX, 10% COTTON

XXS 4-6	S 5-7	M 7-9	L 9-11	XL 10-13
------------	----------	----------	-----------	-------------

SR MSRP **\$11.99** L-XL
JR MSRP **\$10.99** S-M



GREY/BLACK/ROYAL
(Col.0441)



KELLY/FOREST
(Col.0310)



GREY/BLACK/ROYAL
(Col.0441)

COMBI GK L/S
GK-1960

V-Neck collar in self fabric. Raglan cut sleeve with contrast piping on sleeve opening. Padded elbows. Embroidered logo.

FABRIC | 100% LIGHTWEIGHT POLYESTER INTERLOCK

SLIM FIT		PRO FIT		RELAXED FIT	
YXS	YS	YM	YL	YXL	
S	M	L	XL	XXL	

SR MSRP **\$39.99** | JR MSRP **\$37.99**



BLACK/WHITE
(Col.0001)

SIMPLE II GK
GK-1411

Goalkeeper shorts have padded hips for protection. Elastic waistband with drawcord. INSEAM: 6-INCH.

FABRIC | 100% POLYESTER

YXS	YS	YM	YL	YXL
S	M	L	XL	XXL

SR MSRP **\$39.95** | JR MSRP **\$34.95**



NEON YELLOW/BLACK
(Col.0581)

FLY GK S/S
GK-1209

Round neck in self fabric with contrast piping around collar. Raglan cut sleeve with contrast piping on sleeve opening. Embroidered logo.

FABRIC | 100% PLAIN POLYESTER

SLIM FIT		PRO FIT		RELAXED FIT	
YXS	YS	YM	YL	YXL	
S	M	L	XL	XXL	

SR MSRP **\$39.99** | JR MSRP **\$39.99**


KEEPER PANTS
GK-0300

Goalkeeper pants feature padded hips and knees for ultimate protection. Perfect for hardground fields, indoor and cold weather.

FABRIC | 100% HEAVY WEIGHT POLYESTER

YXS	YS	YM	YL	YXL
S	M	L	XL	XXL

SR MSRP **\$54.95** | JR MSRP **\$49.95**

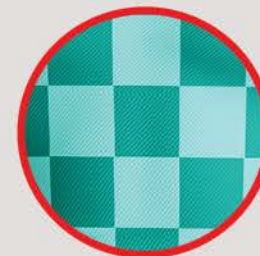


BLACK/WHITE
(Col.0001)

CUSTOM UNIFORMS



Collar
Options



Design
Options



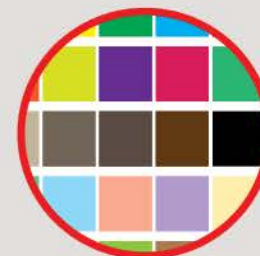
Add
Logo



Jersey
Style



Add
Number



Color
Options

DFT DESIGNED FOR TEAM

SEE OUR **DFT CATALOGUE** FOR MORE DETAILS.

WHAT IS **DYE SUBLIMATION**?

- ◆ It uses heat-sensitive dyes to print graphics, text and virtually any image onto polyester fabric.
- ◆ An image or graphic is transferred onto paper with a special ink dye.
- ◆ The paper is used as a medium to transfer the image onto the fabric.
- ◆ The ink on the paper is infused with heat into the pores of the fabric.
- ◆ Once it cools, the image becomes part of the fabric.

DYE SUBLIMATION ADVANTAGES

- ◆ You can have unlimited color options with no added cost.
- ◆ It produces vibrant colors, perfect for photographic images.
- ◆ You have the ability to create complex print designs.
- ◆ You cannot feel the print.
- ◆ It will not crack, peel or fade.
- ◆ The printing dye is infused into the garment which doesn't add any extra weight.



ELETTO SUBLIMATED DESIGNS



DFT DESIGN

F1001

1. Colors
2. Collar options
3. Font options
4. Logo placements
5. Font placements
6. Font sizes/color styles

Color break > 1 TG 2 TQ 3 WH



DFT DESIGN

F1002

1. Colors (pg18)
2. Collar options (pg15)
3. Font options (pg19)
4. Logo placements (pg16)
5. Font placements (pg16)
6. Font sizes/color styles (pg17)

Color break > 1 KG 2 bk 3 WH



DFT DESIGN

F1003

1. Colors
2. Collar options
3. Font options
4. Logo placements
5. Font placements
6. Font sizes/color styles

Color break > 1 CN 2 RY 3 SB 4 WH

6 SIMPLE STEPS

1. Choose a design template
2. Select your colors
3. Select a collar
4. Add your logo
5. Add the player numbers
6. Now you're ready to play

FOR MORE DESIGN OPTIONS SEE OUR **DFT CATALOGUE**



BLACK/WHITE
(Col.0101)



RED/WHITE/BLACK
(Col.0141)



DARK NAVY/WHITE
(Col.0602)



ROYAL/WHITE/BLACK
(Col.0162)

LEEDS JACKET
TW-1411

Full zip jacket with contrast panel on front. Two front pockets with zippers. Inner draw cord on sides for adjusting fit. Embroidered Elettto logo on right chest.

FABRIC | 100% POLYESTER TRICOT

YXS	YS	YM	YL	YXL
S	M	L	XL	XXL

SR MSRP **\$64.99** | JR MSRP **\$59.99**



BLACK/WHITE
(Col.0101)



BLACK/WHITE
(Col.0101)



DARK NAVY/WHITE
(Col.0602)



BLACK/WHITE
(Col.0101)

LEEDS PANTS
TW-1412

Leeds training pant features a slim bottom fit with zippers for easy access. Two side pockets with zippers. Contrast white piping down leg. Elastic waist band with draw cord. Elasticized panel in calf area for added comfort.

FABRIC | 100% POLYESTER TRICOT

YXS	YS	YM	YL	YXL
S	M	L	XL	XXL

SR MSRP **\$58.99** | JR MSRP **\$51.99**

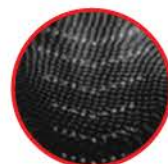

 BLACK/WHITE
(Col.0101)

 BLACK/RED
(Col.0103)

 BLACK/ROYAL
(Col.0104)

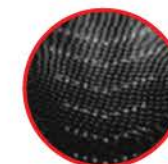
 DARK NAVY/WHITE
(Col.3402)

ENGINEERED

MESH

BACK VIEW

 BLACK/WHITE
(Col.0102)

ENGINEERED

MESH

BACK VIEW
ANTHEM JACKET
TW-1920

The Eletto Anthem full zip jacket features soft polyester fabric to help keep you comfortable and moving freely on the sidelines or while training. This jacket has a ribbed stand-up collar, bigger rib hem, raglan sleeves, thumb holes to provide extra coverage and help keep sleeves in place and laser cut mesh to keep you cool and comfortable.

FABRIC | 100% POLYESTER TRICOT

FEATURES | THUMB LOOPS, LASER CUT ENGINEERED MESH

SLIM FIT		PRO FIT	RELAXED FIT	
YXS	YS	YM	YL	YXL
S	M	L	XL	XXL

 SR MSRP **\$64.99** | JR MSRP **\$61.99**
ANTHEM ¼ ZIP JACKET
TW-1930

The Eletto Anthem ¼ zip jacket features soft polyester fabric to help keep you comfortable and moving freely on the sidelines or while training. This jacket has a ribbed stand-up collar, raglan sleeves, thumb holes to provide extra coverage and help keep sleeves in place and laser cut mesh to keep you cool and comfortable.

FABRIC | 100% POLYESTER TRICOT

FEATURES | THUMB LOOPS, LASER CUT ENGINEERED MESH

SLIM FIT		PRO FIT	RELAXED FIT	
YXS	YS	YM	YL	YXL
S	M	L	XL	XXL

 SR MSRP **\$59.99** | JR MSRP **\$54.99**

MUNICH ELITE PANT
TW-2000
**NEW
PRODUCT**
**BOOKING
PROGRAM**
**NEW
PRODUCT**
MUNICH ELITE ¾ PANT
TW-2001

 BLACK/WHITE
(Col.0102)

 DARK NAVY/WHITE
(Col.3402)

Munich Elite Pant features a slim bottom fit with a zipper in the back for easy access. 2 Front pockets. Elastic waist band with draw cord. Eletto Logo on left upper leg

FABRIC | 100% POLYESTER TRICOT

SLIM FIT		PRO FIT		RELAXED FIT	
YXS	YS	YM	YL	YXL	
S	M	L	XL	XXL	

 SR MSRP **\$62.95** | JR MSRP **\$59.95**

 BLACK/WHITE
(Col.0102)

Munich Elite ¾ Pant features a slim fit with piping on bottom opening. 2 side pockets. Elastic waist band with draw cord. Eletto Logo on left upper leg.

FABRIC | 100% POLYESTER TRICOT

SLIM FIT		PRO FIT		RELAXED FIT	
YXS	YS	YM	YL	YXL	
S	M	L	XL	XXL	

 SR MSRP **\$49.95**



 BLACK/WHITE
(Col.0101)

LEEDS WIND JKT
TW-1613

The Leeds Wind Jacket is made of a light nylon, and comes with a mesh lining. The outer shell is wind proof and water repellent. Includes a removable hood, 2 front pockets, drawcord, and elastic cuffs.

FABRIC | NYLON WITH COATING AND MESH LINING

SLIM FIT		PRO FIT		RELAXED FIT	
		YM	YL	YXL	
S	M	L	XL	XXL	

 SR MSRP **\$79.99** | JR MSRP **\$76.99**

 BLACK/WHITE/NEON YELLOW
(Col.010248)

**NEW
PRODUCT**
CALCIO WINTER JACKET
TW-2020

The Calcio winter jacket is perfect for our colder months. The inner liner is a vibrant neon yellow. Padded hood for warmth and protection from windy elements. Zippered front pockets and inside pocket with closure. Right chest Logo

FABRIC | 100% PADDED NYLON

SLIM FIT		PRO FIT		RELAXED FIT	
XS	S	M	L	XL	XXL

 MSRP **\$149.99**

 ROYAL/WHITE
(Col.0162)

 RED/WHITE
(Col.0142)

 BLACK/WHITE
(Col.0101)

		YM	YL	YXL
S	M	L	XL	XXL

		YM	YL	YXL
S	M	L	XL	XXL

		YM	YL	YXL
S	M	L	XL	XXL

OSLO RAIN JACKET
TW-1060

The Oslo Rain Jacket is detailed with piping across the front and the length of the sleeve. The front of the jacket is completely seam sealed. Includes full front zipper with wind-stop overlap band, 2 front pockets with zipper closure, draw cord, and a hidden hood behind the collar. Mesh inner lining with back vent for ventilation. Logo right chest.


 ROYAL/WHITE
(Col.0162)


SLIM FIT		PRO FIT		RELAXED FIT	
----------	--	---------	--	-------------	--

 SR MSRP **\$79.99** | JR MSRP **\$76.99**

FABRIC | 100% WATER-PROOF NYLON WITH AC COATING AND MESH


 BLACK/WHITE
(Col.0101)

 RED/WHITE
(Col.0142)

 WHITE/WHITE
(Col.0002)

 ROYAL/WHITE
(Col.0162)

LEEDS POLO
TW-1410

Light breathable DryForm fabric with self fabric double collar and buttons. Contrast panel on front upper chest. Piping on sleeves and bottom opening. DryForm fabric allows for great comfort and improved performance.

FABRIC | 100% LIGHT POLYESTER DRYFORM TECHNOLOGY FABRIC

FEATURES | DRY-FORM TECHNOLOGY, MESH VENTING SYSTEM

SLIM FIT		PRO FIT		RELAXED FIT	
YXS	YS	YM	YL		
XS	S	M	L	XL	XXL

 MSRP **\$34.95**
**NEW
PRODUCT**

 GRAPHITE/WHITE
(Col.1102)

 BLACK/WHITE
(Col.0102)

 DARK NAVY/WHITE
(Col.3402)

 RED/WHITE
(Col.0302)

 ROYAL/WHITE
(Col.0402)

 WHITE/CHARCOAL
(Col.0211)

TRAINER ELITE POLO
TW-1911

This Trainer Elite polo is a classic clean-cut style for endless versatility. This quality polo is light and made with a unique Micro Mesh on both shoulders for an even better breathability. The 100% Polyester fabric is soft, durable and allows moisture vapor to be transmitted through the material. Eletto stitched logo on the upper right chest. A classic item with style that can be worn in sports or simply as a casual clothing.

FABRIC | 100% POLYESTER

FEATURES | MICRO MESH ON SHOULDERS, 3 BUTTONS (2 ARE HIDDEN), SLIM FIT

SLIM FIT		PRO FIT		RELAXED FIT	
YXS	YS	YM	YL		
XS	S	M	L	XL	XXL

 MSRP **\$39.95**



INTERNAL
HOOD
MESH
LINING



LARGE
KANGAROO
FRONT
POCKET



LARGE
CUFFS
LARGE
WAISTBAND



Snorkel Neckline



Premium Honeycomb Fabric



Thumb Hole Loops

CAMPIONE ELITE HOODIE
TW-1710

Training hoodie in premium quality and fit. Hoodie with mesh lining for comfort. Front large pocket with white piping. Large cuffs on sleeve and bottom opening. Draw cord to adjust neck.

FABRIC | PREMIUM FLEECE POLYESTER.

FEATURES | SHOULD BE INTERNAL HOOD MESH, LARGE KANGAROO POCKET, LARGE SLEEVE CUFFS AND WAISTBAND

POCKET | LARGE SLEEVE CUFFS AND LARGE WAISTBAND CUFF

SLIM FIT		PRO FIT		RELAXED FIT	
		YM	YL	YXL	
S	M	L	XL	XXL	

SR MSRP **\$64.95** | JR MSRP **\$59.95**

ANTHEM ELITE HOODIE
TW-2010

Premium quality fleece hoodie with great fit. Adjustable hood with open snorkel neckline, Front kangaroo pocket, Ribbed cuffs with thumb hole loops, ribbed bottom hem on sides and back Hoodie with mesh lining.

FABRIC | PREMIUM HONEYCOMB FABRIC

FEATURES | HIGH COLLAR/INTERNAL HOOD MESH LINING/LARGE KANGAROO/THUMB HOLES

SLIM FIT		PRO FIT		RELAXED FIT	
		YM	YL	YXL	
S	M	L	XL	XXL	

SR MSRP **\$64.95** | JR MSRP **\$59.95**

ELETTO**TRAINING****TRAINING VEST | CUSTOM | RETAIL PACK**

ROYAL
(Col.0004)



NEON YELLOW
(Col.0008)



ORANGE
(Col.0009)



NEON GREEN
(Col.0015)



FUSCHIA
(Col.0990)



RED
(Col.0003)



ROYAL
(Col.0004)

TRAINING VEST**TW-0450**

The ELETTO TRAINING VEST is available in youth, junior and senior sizes. Made from 100% Polyester Mesh. Elettto logo on right chest, silk screen printed logo.

FITTING TIPS | SR: S, M, L, XL | JR: YM, YL, YXL | YTH: YXXS, YXS, YS

YTH

JR

SR

MSRP **\$7.99**

CUSTOM VEST PROGRAM

2 easy steps



OPTION A
ADD YOUR LOGO



OPTION B
ADD YOUR LOGO

**TRAINING VEST****PK-3003****1 BOX = 10 ELETTO TRAINING VESTS**

- ◆ Fabric: 100% Polyester Mesh
- ◆ 10 per box
- ◆ RETAIL-FRIENDLY
- ◆ STACKABLE

SMART PACKAGE

Retail box packaging

YTH

JR

SR

MSRP **\$74.99**

CONTACT US FOR MORE DETAILS



Dry-Form Technology keeps athletes comfortable in all elements. Treated fabric to control moisture created from the body.

ELEMENT gear compression

ENGINEERED



Laser-cut engineered holes to maximize ventilation during performance.



ACTIVE 4 WAY
STRETCH

Active 4-Way Stretch fabric provides athletes with greater mobility in any direction and ultimate comfort.



Thumb Loop Technology keeps sleeves extended and hands warmer.



WHITE
(Col.0002)



WHITE
(Col.0002)



RED
(Col.0003)



ROYAL
(Col.0004)



NAVY
(Col.0005)



BLACK
(Col.0001)

ELEMENT GEAR LS COMPRESSION TOP
TW-1825

Element Gear LS compression top features all our performance technologies to help athletes compete at the highest level.

FABRIC | LIGHTWEIGHT LYCRA

FEATURES | DRY-FORM TECHNOLOGY, THUMB LOOPS
LASER CUT ENGINEERED MESH, 4-WAY STRETCH

SLIM FIT	PRO FIT	RELAXED FIT
XXS XS	S M	L XL

MSRP **\$44.95**



RED
(Col.0003)



ROYAL
(Col.0004)



NAVY
(Col.0005)



BLACK
(Col.0001)

ELEMENT GEAR COMPRESSION SHORT
TW-1827

Element Gear Compression shorts features our performance technologies to help athletes maintain an optimum fit to compete at the highest level.

FABRIC | LIGHTWEIGHT LYCRA

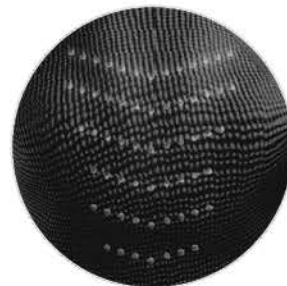
INSEAM | 7"

FEATURES | DRY-FORM TECHNOLOGY, 4-WAY STRETCH

XXS XS	S M	L XL
--------	-----	------

MSRP **\$34.99**


 WHITE
(Col.0002)

 BLACK
(Col.0001)


BACK


 WHITE
(Col.0002)


BACK

ELEMENT GEAR SS COMPRESSION TOP
TW-1826

ES Element Gear SS Compression top features all our performance technologies to help athletes compete at the highest level.

FABRIC | LIGHTWEIGHT LYCRA

FEATURES | DRY-FORM TECHNOLOGY, LASER CUT ENGINEERED MESH, 4-WAY STRETCH

SLIM FIT

PRO FIT

RELAXED FIT

XXS|XS

S|M

L|XL


**ACTIVE 4 WAY
STRETCH**

 MSRP **\$34.99**

 BLACK
(Col.0001)

 WHITE
(Col.0002)

**COMPRESSION
SLEEVE**

JUNIOR	20 cm
SENIOR	25 cm

Please size down if you desire a tight fit.

COMPRESSION SLEEVE
AC-0048

Knitted compression sleeve with Dry-Form Technology wicks away your sweat. The compression holds your shinguards in place and allows no restrictions in motion.

FEATURES | DRY-FORM TECHNOLOGY

JUNIOR

SENIOR


 MSRP **\$9.99**



ROYAL/WHITE
(Col.0162)



RED/WHITE
(Col.0142)



WHITE/BLACK
(Col.0121)



BLACK/WHITE
(Col.0101)



ROYAL/WHITE
(Col.0162)



CLASSIC NAVY/WHITE
(Col.0182)

ELETTO TEAM TEE
TW-1950

Eleto team tee is perfect for training, camps and promotional.
Eleto logo full chest.

FABRIC | COTTON

YXS	YS	YM	YL	YXL	
	S	M	L	XL	XXL

MSRP **\$16.99**



RED/WHITE
(Col.0142)



RED/WHITE
(Col.0142)



WHITE/BLACK
(Col.0121)



BLACK/WHITE
(Col.0101)



ROYAL/WHITE
(Col.0162)



CLASSIC NAVY/WHITE
(Col.0182)

ELETTO CLASSIC TEE
TW-1955

Eleto classic tee is perfect for training, camps and promotional.
Eleto logo right chest.

FABRIC | COTTON

YXS	YS	YM	YL	YXL	
	S	M	L	XL	XXL

MSRP **\$16.99**


 BLACK/WHITE
(Col.0101)

FIRENZE
SB-1910

Soccer Firenze Backpack features a wide opening main compartment for easy access. Side water bottle pocket, padded shoulder straps, water-repellent base to help keep your gear dry and a zip bottom pocket that can hold up to a size-5 soccer ball.

FABRIC | 420D/PVC & SOCCER CLOTH

SIZE | 20 x 12 x 9.5 INCHES

 MSRP **\$49.99**

 BLACK/WHITE
(Col.0101)

UDINE
SB-0810

Soccer Backpack with inside front mesh pocket for any size soccer ball. Main compartment zipper is U-SHAPE to provide easy access. Two side pockets with ventilation for shoes and shins. Padded shoulder straps for ultimate comfort. Soccer ball not included.

FABRIC | 420D NYLON

SIZE | 17 x 12.5 x 7 INCHES

 MSRP **\$39.99**

 BLACK/WHITE
(Col.0101)

MONZA
SB-1580

Soccer Backpack with wide opening main compartment for easy access. External pocket for extra storage. Padded shoulder straps for ultimate comfort. Eletto logo on front pocket.

FABRIC | 420D NYLON

SIZE | 18 x 12.75 x 6.25 INCHES

 MSRP **\$34.99**

 BLACK/WHITE
(Col.0102)

VICENZA DUFFLE BAG
SB-2050

Extra deep wet zip side compartment with 2 ventilated air vents. Large dual-zip main compartment. Adjustable, removable shoulder strap. Dual padded grip top handles. Zip Valuables pocket inside main compartment.

FABRIC | 420D/PVC & SOCCER CLOTH

SIZE | 24" X // 21" X 13"

 MSRP **\$49.95**

 BLACK/RED
(Col.0103)

 BLACK/ROYAL
(Col.0104)

 DARK NAVY/WHITE
(Col.3402)



 BLACK/WHITE
(Col.0101)


Add your logo


 NEON BLUE/
BLACK
(Col.0587)

 GREY/BLACK
(Col.2101)

**EASY
FOLD**
Unfold and
flatten in
SECONDS

**HOLDS 8
BALLS
PLUS EQUIPMENT**

 BLACK/BLACK/WHITE
(Col.0001)

 BLACK/RED/WHITE
(Col.010302)

FOLDABLE BACKPACK
SB-1920

Perfect for recreational sports, day-to-day use or travel. Folds into zippered inner pocket to fit anywhere. Features a classic shape with several pockets for storage. Side pocket for water bottle. A true space saver and easily folds up into a small pocket. Lightweight and handy.

FABRIC | NYLON

 MSRP **\$19.99**
DUFFLE HOLDALL
SB-1406

Large HOLD-ALL bag with U-SHAPE zipper for easy access. Durable water-proof nylon material with heavy-duty zipper. Padded shoulder strap for comfort. Carrying handles. Perfect for coaches and managers to carry equipment and uniforms.

FABRIC | 420D NYLON

SIZE | 34 x 12.5 x 13 INCHES

 MSRP **\$54.99**
DRAWSTRING TEAM BAG
SB-1710

Nylon drawstring bag with cords to carry over shoulders.

SIZE | 18 x 13.75 INCHES

 MSRP **\$9.99**

DRAWSTRING CASUAL
SB-1790

Nylon drawstring bag with cords to carry over shoulders.

FABRIC | NON-WOVEN

SIZE | 14¾ x 12 INCHES

 MSRP **\$7.99**

**HOLDS
14
BALLS
SIZE 5**

 BLACK
(Col.01)

 RED
(Col.03)

 ROYAL
(Col.04)

 WHITE
(Col.02)

MESH BALL BAG
AC-0030

Elettto Soccer mesh ball bag holds up to 14 size-5 soccer balls. Draw cord for closer. Can also be used for equipment. Perfect to transport team uniforms.

FABRIC | MESH

SIZE | 28" HOLDS UP TO 14 SIZE 5 BALLS

 MSRP **\$13.99**

**HOLDS
15
BALLS
SIZE 5**

 BLACK/WHITE
(Col.0101)

TRAINING BALL BAG
SB-1130

Elettto Soccer ball bag holds up to 15 size-5 soccer balls. Polyester bag with strong mesh. Adjustable straps for easy carry. Can also be use for equipment. Durable base for support.

FABRIC | 600D POLYESTER AND MESH

SIZE | 28" HOLDS UP TO 15 SIZE 5 BALLS

 MSRP **\$34.99**

FUZIONSEAM TECHNOLOGY



THE LIGA 45.1 FUZIONSEAM



FOAM AND RUBBER INNER LINING/SOFT PU

- Soft touch
- Abrasion resistance
- Consistent rebound



FUZIONSEAM TECHNOLOGY

- Superior aerodynamics
- Better flight accuracy
- Water-repellent
- 3x more durable



BUTYL THREAD WOUND BLADDER

- Excellent air retention
- Long-lasting shape retention
- Excellent durability

POWER • CONTROL • ACCURACY

**NEW
PRODUCT**

 WHITE/MULTI NEON
(Col.0278)

LIGA 50.1 PROFESSIONAL
BA-2050

Made in top-quality Japanese 1.70mm PU non-woven microfiber for Pro Match quality. 4-ply lamination with latex bladder. 100% hand-stitched. Panels: 32.



PRO STANDARD QUALITY	MATCH STANDARD QUALITY	TRAINING STANDARD QUALITY
SIZE 3 Age 7 and under	SIZE 4 Age 8-12	SIZE 5 Age 13 and up

 MSRP **\$89.99**
**NEW
PRODUCT**

 WHITE/MAGENTA/BLACK
(Col.026301)

LIGA 45.1 FUZIONSEAM
BA-2045

FuzionSeam® Technology Match ball is machine stitched made with premium PU outer shell. Seamless bonds make the ball water repellent, while ensuring shape retention. This ball brings consistency in flight, retains air more efficiently, excellent bounce And 3x longer durability.



PRO STANDARD QUALITY	MATCH STANDARD QUALITY	TRAINING STANDARD QUALITY
SIZE 3 Age 7 and under	SIZE 4 Age 8-12	SIZE 5 Age 13 and up

 MSRP **\$44.99**

 WHITE/SKY BLUE/BLACK
(Col.0125)

LNA-40 RIGORE II
BA-1730

Made in Korean PU based on non-woven material. EVA (PE FOAM) for soft touch feel. 4PLY lamination with Taiwan Butyl Bladder and Butyl valve for better air retention. Printed with lead free, deep penetrating ink. Hand Stitched. Panels: 32.



PRO STANDARD QUALITY	MATCH STANDARD QUALITY	TRAINING STANDARD QUALITY
SIZE 3 Age 7 and under	SIZE 4 Age 8-12	SIZE 5 Age 13 and up

 MSRP **\$49.99**

 WHITE/NEON BLUE/ROYAL
(Col.1104)

LIGA COMPETITION 30.1 GRIP
BA-1930

Made in 1.30mm korean PU non-woven material with stubs for better ball control. 4-ply lamination with Taiwan butyl valve. Printed with lead free, deep penetrating ink. Hand Stitched. Panels: 32.



PRO STANDARD QUALITY	MATCH STANDARD QUALITY	TRAINING STANDARD QUALITY
SIZE 3 Age 7 and under	SIZE 4 Age 8-12	SIZE 5 Age 13 and up

 MSRP **\$39.99**

ULTRA-LITE BALL TECHNOLOGY

ELETTO's Ultra-Lite Ball was created to engage the first-time youth player and build their confidence with the ball, and inspire passion for the game.

Play the German and Dutch way

Lite Ball Technology was implemented in the youth soccer development program in Germany and the Netherlands in 2001. The technology was created for youth players to build confidence and skills the right way from a young age. The Lite Ball composition increases control, touch, ease of passing and shooting. A regular weighted ball is hard and heavy for youth and does not allow them to develop their game properly. Lite balls allow them to develop their skills and have fun at the same time.

Benefits (LNA-290/350)

- Bigger ball for youth players allows an easier transition to a size-5 ball.
- Lighter weight allows youth to develop skills faster, making it fun for them.
- Easier to move the ball around the field.
- Builds player confidence to master the ball and express technique.
- Allows youth to feel comfortable heading the ball.
- Ball's lightweight composition increases flight for control, touch, ease of shooting and passing.

SIZE 5

30% lighter
than average
size-5
soccer balls

12
ounces

SIZE 4

25% lighter
than average
size-4
soccer balls

10
ounces



WHITE/NEON BLUE/NEON GREEN
(Col.0278)



WHITE/NEON GREEN/NAVY
(Col.1093)

LIGA FUTSAL ULTRA-LITE 290

BA-2013

Made in 4 layer PU. Specail LOW BOUNCE Butyl bladder for limited bounce cintrol and air retention. Over 100 grams lighter allowing the younger athlete to improve confidence when playing futsal. Panels: 32



LOW BOUNCE

PRO STANDARD QUALITY

MATCH STANDARD QUALITY

TRAINING STANDARD QUALITY

SIZE 3

Age 7 and under

**OFFICIAL
SIZE**

SIZE 5

Age 9-12

MSRP **\$37.95**

LNA-290 ULTRA LITE

BA-1729

LNA-350 ULTRA LITE

BA-1735

Soft touch external shell for softer player/ball impact. Butyl bladder for great air retention. Panels: 32.



PRO STANDARD QUALITY

MATCH STANDARD QUALITY

TRAINING STANDARD QUALITY

SIZE 3

Age 7 and under

SIZE 4

Age 4-8

SIZE 5

Age 9-12

MSRP **\$29.99**

ELETTO**SOCCER BALLS****LIGA 28.1 | LIGA TRAINER | FUTSAL | INDOOR | MINI**WHITE/RED/BLACK
(Col.020301)**NEW
PRODUCT****LIGA 28.1 TRADIZIONE****BA-2005**

Made with Korean non-woven PU shiny material. High quality smooth surface 2 tone effect. 4PLY crossed lining lamination with Taiwan Butyl Bladder with butyle valve for excellent air retention. Panels: 32.

WHITE/ORANGE/BLACK
(Col.0128)**NEW
PRODUCT****LIGA TRAINER 12.1 SOFT TOUCH****BA-1912**

Made in TPU material with EVA foam. Rubber wound bladder. Soft cushion cover creates softer touch on contact. Machine-stitched. 32 panels.

WHITE/NEON BLUE
(Col.0587)NEON GREEN/BLACK
(Col.1110)**CLASSICO****BA-1925**

Made in PU material with EVA foam. Rubber wound bladder. Soft cushion cover creates softer touch on contact. Machine Stitched Panels: 32

PRO STANDARD QUALITY	MATCH STANDARD QUALITY	TRAINING STANDARD QUALITY
SIZE 3 Age 7 and under	SIZE 4 Age 8-12	SIZE 5 Age 13 and up

MSRP **\$31.95****LOW BOUNCE**WHITE/MULTI NEON
(Col.0278)**NEW
PRODUCT****LIGA FUTSAL CINCO III****BA-2012**

Made in 4 layer Korean PU. Special low bounce Butyl Bladder for limited bounce control and air retention. Panels: 32.

PRO STANDARD QUALITY	MATCH STANDARD QUALITY	TRAINING STANDARD QUALITY
SIZE 3 Age 7 and under	SIZE 4 Age 8-12	SIZE 5 Age 13 and up

MSRP **\$25.99****LOW BOUNCE**YELLOW/BLACK/RED
(Col.050103)**NEW
PRODUCT****FELT III LOW BOUNCE****BA-1916**

Made in 4 layer English felt. Indoor Use only. 32 panel high visibility yellow. The recommended Phys.Ed. indoor soccer ball.

PRO STANDARD QUALITY	MATCH STANDARD QUALITY	TRAINING STANDARD QUALITY
SIZE 3 Age 7 and under	SIZE 4 Age 8-12	SIZE 5 Age 13 and up

MSRP **\$24.99**NEON BLUE/BLACK
(Col.0587)NEON GREEN/BLACK
(Col.1110)WHITE/NAVY
(Col.0234)**CLASSICO MINI****BA-1940**

Mini Soccer ball is great for skill training and developing your touch.

PRO STANDARD QUALITY	MATCH STANDARD QUALITY	TRAINING STANDARD QUALITY
SIZE 3	SIZE 4	SIZE 5

MSRP **\$37.49**

PRO STANDARD QUALITY	MATCH STANDARD QUALITY	TRAINING STANDARD QUALITY
SIZE 3	SIZE 4	SIZE 5

MSRP **\$44.99**

SIZE 1

MSRP **\$13.99**

ELETTO**SOCCER BALLS****LIGA TRAINER | BOUNCER TRAINER 8.1 BALL PACK**

WHITE/ORANGE/BLUE
(Col.0128)
SIZE 3, 4, 5



WHITE/ROYAL
(Col.0123)
SIZE 5 ONLY



WHITE/RED
(Col.0122)
SIZE 3 ONLY



SOFT
TOUCH

**LIGA TRAINER 10.1****BA-1900**

Made in 2.85mm PVC with EVA FOAM. Butyl/Rubber bladder for air retention. Soft cushion cover creates a soft touch on contact. Panels: 32. Machine stitched ball.

PRO STANDARD
QUALITY

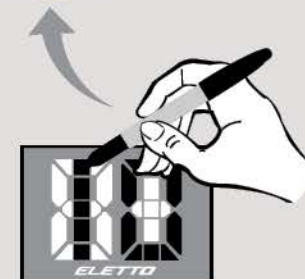
MATCH STANDARD
QUALITY

TRAINING
STANDARD QUALITY

SIZE 3
Age 7 and under

SIZE 4
Age 8-12

SIZE 5
Age 13 and up

MSRP **\$20.99****PLAYER
NUMBER ID**

WHITE/LIME GREEN
(Col.0237)
SIZE 4, 5

**BOUNCER TRAINER 8.1 BALL PACK****BA-1908**

Great quality training balls. 10 balls per box. Retail friendly packaging.

PRO STANDARD
QUALITY

MATCH STANDARD
QUALITY

TRAINING
STANDARD QUALITY

SIZE 3

SIZE 4
Age 8-12

SIZE 5
Age 13 and up

MSRP **\$259.95**

10
PACK

**1 BUNDLE
PACK
10 ELETTO
TRAINING
BALLS**

CUSTOM BALL PROGRAM

3 EASY STEPS



Ball Color break ›

1 FG 2 KG 3 LG 4 WH



STEP 1

Choose a ball from our collection



STEP 2

Choose your colors



STEP 3

Add your logo

MINIMUM ORDER OF 300 • CONTACT US FOR MORE DETAILS

VentoGoal **PLAY ANYWHERE** POWERED BY ELETTO SPORT ANYTIME



VENTO GOAL **AC-2022**

SIZE | 12' x 6' **MSRP \$895.95**
Leisure Plus Quality
SUGGESTED USE:
U12+ JR/ SR training net



VENTO GOAL **AC-2021**

SIZE | 8' x 5' **MSRP \$264.99**
Leisure Plus Quality
SUGGESTED USE:
U8-U12 non official games
JR/SR training net/futsal



VENTO GOAL **AC-2020**

SIZE | 5' x 4' **MSRP \$234.99**
Leisure Plus Quality
SUGGESTED USE:
U4-U7 non official games
JR/SR training net



VENTO GOAL **AC-2011**

SIZE | 6' x 4' **MSRP \$144.99**
Leisure Quality
SUGGESTED USE:
U4-U7 non official games
JR/SR training net



VENTO GOAL **AC-2010**

SIZE | 4' x 2.65' **MSRP \$114.99**
Leisure Quality
SUGGESTED USE:
2 vs. 2 games
JR/SR training net



Quick installation
Inflates in less than 35 seconds



Easy to carry
Fits in carry bag once deflated



Safe
Soft hose bends on player collision with the goal, preventing injuries



Performing goal
Professional products and feel when in contact with the ball



Durable
Strict control and certificate for a reliable product

NETS INCLUDE: PUMP, CARRY BAG AND ANCHORS OR SAND BAGS

EASY-FOLD TRAINING GOALS

POPS UP AND FLATTENS IN SECONDS

**6
FEET**



POP-UP GOAL SET

AC-0065

SIZE | 6' x 3.5'

MSRP \$139.99

**4
FEET**



POP-UP GOAL SET

AC-0064

SIZE | 4' x 2.5'

MSRP \$109.99

**2½
FEET**



POP-UP GOAL SET

AC-0066

SIZE | 2.5' x 1.5'

MSRP \$89.99

**POP-UP
GOALS**
SETS OF 2

**GREAT FOR
FIELDS
BACKYARDS
BEACHES**

Nets pop-up in seconds and can easily be flattened for transport. Polyester net, 15mm mesh. Floor corner in metal for durability covered in nylon for protection.

INCLUDES

- Elastic hooks with pegs
- Nylon carrying bag
- Sets of 2

**4
FEET**



INCLUDED



Carrying bag



Ground pegs

**POP-UP
GOALS**
SETS OF 2

**GREAT FOR
FIELDS
BACKYARDS
BEACHES**

SQUARE POP-UP

AC-0067

SIZE | 4' x 3'

MSRP \$119.99

Nets pop-up in seconds and can easily be flattened for transport. Polyester net, 15mm mesh. Metal corner for durability. Elastic hook to lock to ground with pegs.

INCLUDES

- Ground pegs
- Nylon carrying bag
- Sets of 2


DISC CONE SET

Set of 10 disc cones with header card packaging for retail display. Light weight and stacks flat for easy storage.

MSRP **\$12.99**


9" CONE

AC-0017

9" Cone. Sold individually.

MSRP **\$2.50**


CLIPBOARD

AC-0010

Clipboard comes with an erasable marker with brush. Front side 1/2 field and back side full field.

MSRP **\$24.99**


DISC CONE INDIV.

AC-0014

Light weight and stacks flat for easy storage. Sold individually. Available in 5 vibrant colors.

MSRP **\$1.10**


6" CONE

AC-0036

6" Cone. Sold individually.

MSRP **\$1.99**


MAGNETIC COACH BOARD

AC-0060

Magnetic and Dry Erase Coach Board. Includes an erasable marker, 27 magnets, and wall mount brackets. Dimensions: 30cm x 45cm.

MSRP **\$44.99**



**RETAIL
PACKAGED**

**DISC CONE CARRIER
AND CONE**

AC-0018

Sold in set of 40. 4 colors. Carrier included.

MSRP **\$49.99**


DISC CONE CARRIER

AC-0015

Disc cone carrier hold 40 disc cones. Sold individually.

MSRP **\$7.99**


**MAGNETIC AND DRY
ERASE COACH FOLDER**

AC-0011

Magnetic Coach Folder with magnetic field. Folder includes magnets, dry erase marker. Planner sheets with clip for easy refill.

MSRP **\$7.99**



**RETAIL
PACKAGED**

**DISC CONE CARRIER
AND CONE**

AC-0031

Sold in set of 40. Orange color. Carrier included.

MSRP **\$49.99**


FLAT ROUND MARKERS

**X6
SET**

Circular field markers. Sold in packs of 6. AC-0033 | Size: 25 cm MSRP **\$24.99**

Orange

AC-0034 | Size: 15 cm

MSRP **\$19.99**

GOLD

**X12
SET**



**BAG
INCLUDED**

OCTAGON RINGS

AC-0078

12 octagon-shaped rings that can be joined together with special clips. Made with heavy duty plastic.

MSRP **\$64.99**


AGILITY SPEED LADDER

Agility Speed Ladder adjustable at different lengths. 20" wide.
AC-0028 | Size: 4m long MSRP **\$47.99**
AC-0058 | Size: 8m long MSRP **\$69.99**

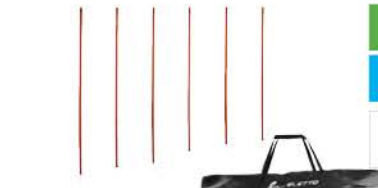

SLALOM POLE

Matching bag AC-0059 sold separately.
MSRP **\$13.99**

**FITS
FLAT BASE**

 BAG SOLD
SEPARATELY

 SOLD
INDIVIDUALLY

AC-0013

**SLALOM POLE
AND BAG COMBO**

Includes: 6 Slalom Poles plus Carry bag
MSRP **\$98.00**

**FITS
FLAT BASE**
**RETAIL
PACKAGED**

 BAG
INCLUDED

AC-0113

**DETACHABLE
SLALOM POLE**

Matching bag AC-0056 sold separately.
MSRP **\$14.99**

**FITS
FLAT BASE**

 BAG SOLD
SEPARATELY

 SOLD
INDIVIDUALLY

AC-0012

FLAT SPEED RING
AC-0063

Flat speed ring for training exercises.
18" diameter. PVC rings 3/4" wide.
Assorted colors.
MSRP **\$41.99**


**ADJUSTABLE
HURDLE KIT**
AC-0027

Hurdles can be adjusted between 6" and 12" in height by rotating feet. Sold in 6 hurdles per set.
MSRP **\$124.99**

**ADJUST
BETWEEN
6" & 12"**

 BAG
INCLUDED


Orange Col. 06

**NEW
PRODUCT**

 SOLD
INDIVIDUALLY

FLAT BASE
AC-0089

Can be filled with sand or water.
Compatible with Slalom poles and corner flags.
MSRP **\$16.99**


**COLLAPSIBLE
CORNER FLAG**
AC-0029

Collapsible corner flag with PVC pole.
Steel spike bottom.
MSRP **\$89.99**

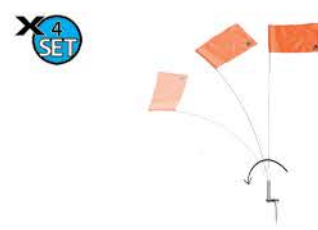
**FITS
FLAT BASE**

**SOCCER-TENNIS
NET SET**
AC-0075

Soccer-Tennis net set great for training or backyard fun. 2 heavy cone bases allow use on all surfaces.
Size: 10' x 4' MSRP **\$119.99**


**SOCCER-TENNIS
NET COURT SET**
AC-0096

Soccer-Tennis net great for drills, competition or backyard fun. Durable steel pipe construction. Easy to assemble. Collapsible.
Size: 13' x 2.8' MSRP **\$149.99**


CORNER FLAG
AC-0016

Corner flag with fibre glass pole.
MSRP **\$109.99** MSRP **\$119.99***
*With bag AC-0059


INDOOR CORNER FLAG
AC-0054

Indoor corner flag with flat base.
MSRP **\$109.99**



SOLD
INDIVIDUALLY

PASSING ARC
AC-0023

Spikes on bottom for easy insertion in ground. 20" x 12".

MSRP **\$14.99**



**NEW
PRODUCT**

SOLD
INDIVIDUALLY

INDOOR PASSING ARC
AC-0022

Great for turf and indoor use.

MSRP **\$14.99**


**CORNER FLAG/SLALOM
POLE CARRY BAG**
AC-0059

AC-0016 | Corner flags (4)
AC-0013 | Slalom poles (12)

Strong nylon bag made to easily transport and store poles and flags.

AC-0059 | Size: 72" x 8.5" · MSRP **\$19.99**


**COLLAPSIBLE CORNER
FLAG CARRY BAG**
AC-0056

AC-0029 | Collapsible corner flag (8)
AC-0013 | Detachable Slalom Poles (8)

AC-0056 | Size: 25" x 7" · MSRP **\$14.99**



White/Black
Col. 0002



Red/White
Col. 0003



Neon Pink/Black
Col. 1030



Royal/White
Col. 0004



Neon Green/Black
Col. 1110

THIRST WATER BOTTLE
AC-0071

750ml Plastic water bottle. Top pop-up squirt. Eletto logo.

MSRP **\$6.99**



- 40 plastic bandages
- 1 gauze roll
- 1 roll of tape
- 3 wipes
- 5 gauze pads
- 1 elastic bandage
- 15 antiseptic

- first aid guide
- 2 pairs of gloves
- tweezers
- wipes
- scissors
- 8 triple antibiotic ointment

FIRST AID KIT
AC-0084

Cover all your bases with this versatile, lightweight kit. Contains over 75 essential first-aid supplies. FDA-approved.

MSRP **\$24.99**


**SPEED TRAINING
PARACHUTE**
AC-0086

The ultimate training device for improving speed and strength.

MSRP **\$44.99**


**TRAINING NET
REBOUNDER**
AC-0061

Net with cord for individual training. Ball not included.

MSRP **\$14.99**



CLIP
INCLUDED

**ALUMINIUM WATER
BOTTLE**
AC-0070

500ml aluminium water bottle. Screw-in cap. No logo.

MSRP **\$5.99**



X10
PACK

RETAIL
PACKAGED

INSTANT COLD PACK
AC-0085

Quality cold pack activates instantly. One-time use.

MSRP **\$2.99**



COLORS
 White Col. 0002
 Red Col. 0003
 Royal Col. 0004
 Yellow Col. 0008

SIZES
 Junior • Senior

CAPTAIN BAND VELCRO
AC-0032

Velcro closure captain band with "C".

 MSRP **\$7.99**


COLORS
 Black Col. 0001
 White Col. 0002

SHOE LACES
AC-0050

Durable shoe laces. 2 laces per set.

 MSRP **\$3.99**

WATER BOTTLE x 6 AND HOLDER
AC-0071P

Durable PE water bottle holder with 6 water bottle.

 MSRP **\$49.99**

WATER BOTTLE HOLDER
AC-0021

Durable PE water bottle holder. Holds 6 bottles. Foldable.

 MSRP **\$19.99**


COLORS
 Black Col. 0001
 White Col. 0002
 Red Col. 0003
 Royal Col. 0004
 Navy Col. 0005

SHIN GUARD HOLDERS
AC-0049

Strong elastic shin guard straps. Holds guards in place during play.

 MSRP **\$8.99**


COLORS
 Black Col. 0001
 White Col. 0002

SIZES
 Junior 20 cm
 Senior 25 cm

COMPRESSION SLEEVES
AC-0048

Knitted compression sleeves that keeps guards snug to leg.

 MSRP **\$9.99**

DUAL PUMP
AC-0005

Dual-action ball pump.

 MSRP **\$11.99**

DUAL PUMP WITH HOSE
AC-0008

Dual-action ball pump with 3" hose. Needle included.

 MSRP **\$14.99**

PEN GAUGE
AC-0006

Ball PSI gauge. Comes in retail packaging.

 MSRP **\$9.99**

BALL PRESSURE GAUGE
AC-0007

Ball PSI gauge. Comes in retail packaging.

 MSRP **\$24.99**

100 NEEDLE PACK
AC-0004

Package of 100 needles.

 MSRP **\$29.99**

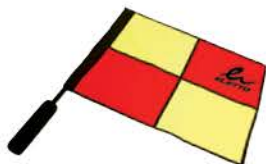
3 NEEDLE PACK
AC-0009

Comes in retail packaging.

 MSRP **\$2.99**

X 2 SET

360° Rotation


DISCIPLINE LINESMAN SWIVEL FLAG
AC-0055

Swivel flag for 360° rotation. Comes in retail packaging.

MSRP **\$29.99**

X 2 SET


POWER LINESMAN FLAG
AC-0047

Lightweight, smaller handle. Comes in retail packaging.

MSRP **\$23.99**


DATA WALLET
AC-0040

Includes 40 score sheets. Comes in retail packaging.

MSRP **\$5.99**


PREMIUM DATA WALLET
AC-0043

Includes pencil and 50 sheets. Comes in retail packaging.

MSRP **\$7.49**


SCORE SHEET

Scoresheets sold in pack of 10.

AC-0052 | English

MSRP **\$2.99**

AC-0053 | French

MSRP **\$2.99**


BASIC STOPWATCH
AC-0001

Comes in retail package.

MSRP **\$19.99**

X 12 SET


BOX OF WHISTLES
AC-0037

12 whistles. 50 mm.

MSRP **\$16.99**


PRO LOUD WHISTLE
AC-0057

High-quality whistle providing loudest, shrillest sound.

MSRP **\$5.99**


COPPER WHISTLE WITH FINGER
AC-0044

Copper whistle with plastic finger handle.

MSRP **\$11.99**


REFEREE WHISTLE
AC-0041

Whistle with neck lanyard.

MSRP **\$4.99**

X 12 SET


NECK LANYARD
AC-0042

Sold in packs of 12.

MSRP **\$19.99**

X 12 SET


WRIST LANYARD
AC-0038

Sold in packs of 12.

MSRP **\$17.49**

**NEW
PRODUCT**

 NEON PINK/ NEON BLUE
BLACK/WHITE
(Col.011828)

 RED/BLUE/
NEON YELLOW/SILVER
(Col.030448)

 CHARCOAL/NEON YELLOW
(Col.1200)

RAPIDO IV PU
OS-1905
FEATURES
UPPER | Textured High Tec Micro-Fiber upper. Reinforced back heel.

INSOLE | Shock absorbing EVA foam on heel.

OUTSOLE | Molded PU with 12 studs.

BENEFITS
UPPER | For best touch control, and textured application allows for maximum grip. Stable heel support.

INSOLE | Added absorption and comfort.

OUTSOLE | Durable, and excellent traction.

6H • 7 • 7H • 8 • 8H • 9 • 9H • 10 • 10H • 11 • 11H • 12 • 13

 SR MSRP **\$59.99**
LNA-090 III TPR JR
OS-2000
FEATURES
UPPER | Soft synthetic light upper. Inner PU lining.

INSOLE | Fixed polyester mesh.

OUTSOLE | Molded PU with 12 studs.

BENEFITS
UPPER | For best touch control and minimal water absorption. Better fit and comfort.

INSOLE | Good comfort, reduces slip.

OUTSOLE | Durable and excellent traction.

Y8 • Y9 • Y10 • Y11 • Y12 • Y13 • 1 • 2 • 3 • 4 • 5 • 6

 JR MSRP **\$34.99**
**NEW
PRODUCT**

 BLACK/NEON BLUE/NEON GREEN/
NEON YELLOW
(Col.0199)

MONDO IV RB
OS-2010
FEATURES
UPPER | Soft synthetic light upper. Polyester mesh lining. Reinforced back heel.

INSOLE | Fixed polyester mesh.

OUTSOLE | Rubber outsole with 12 studs.

BENEFITS
UPPER | Excellent fit, comfort and durability. Anti-slip lining. Durable and stable heel support.

INSOLE | Good comfort, reduces slip.

OUTSOLE | Excellent ground absorption.

6H • 7 • 7H • 8 • 8H • 9 • 9H • 10 • 10H • 11 • 12 • 13

Y10 • Y11 • Y12 • Y13 • 1 • 1H • 2 • 2H • 3 • 3H • 4 • 4H • 5 • 5H

 SR MSRP **\$44.99** | JR MSRP **\$39.99**



BLACK/NEON YELLOW
(Col.0582)



OUTSOLE TS-62

MONDO TF JR
TF-1400
FEATURES

UPPER | Soft synthetic light upper. Polyester mesh lining. Reinforced back heel.

INSOLE | Fixed polyester mesh.

OUTSOLE | Rubber outsole for turf.

BENEFITS

UPPER | Excellent fit, comfort and durability. Anti-slip lining. Durable and stable heel support.

INSOLE | Good comfort, reduces slip.

OUTSOLE | Excellent traction on synthetic turf surfaces. For indoor surfaces.

Y10 • Y11 • Y12 • Y13 • 1 • 2 • 3 • 4 • 5 • 6

JR MSRP **\$39.99**



NEON PINK/WHITE
(Col.1031)
Available in JR only



BLACK/NEON YELLOW/
ORANGE
(Col.0582)



OUTSOLE FRS-80

MONDO II ID JR
IS-1600
FEATURES

UPPER | Soft synthetic light upper. Polyester mesh lining. Reinforced back heel.

INSOLE | Fixed polyester mesh.

OUTSOLE | Non-marking rubber.

BENEFITS

UPPER | Excellent fit, comfort and durability. Anti-slip lining. Durable and stable heel support.

INSOLE | Good comfort, reduces slip.

OUTSOLE | Durable, excellent traction for indoor surfaces.

Y7 • Y8 • Y9 • Y10 • Y11 • Y12 • Y13 • 1 • 1H • 2 • 2H • 3 • 3H • 4 • 4H • 5 • 5H • 6

JR MSRP **\$39.99**

**NEW
PRODUCT**



**BOOKING
PROGRAM**

RED/ROYA/NEON YELLOW/
SILVER
(Col.030448)

LNA-090 III IN JR
IS-2000
FEATURES

UPPER | Soft synthetic light upper. Polyester mesh lining. Reinforced back heel.

INSOLE | Fixed polyester mesh.

OUTSOLE | Non-marking rubber.

BENEFITS

UPPER | Excellent fit, comfort and durability. Anti-slip lining. Durable and stable heel support.

INSOLE | Good comfort, reduces slip.

OUTSOLE | Durable, excellent traction on indoor surfaces.

Y7 • Y8 • Y9 • Y10 • Y11 • Y12 • Y13 • 1 • 1H • 2 • 2H • 3 • 3H • 4 • 4H • 5 • 5H • 6

JR MSRP **\$39.99**



BLACK/NEON
YELLOW/
ORANGE
(Col.0582)


GALA PRO II GUARD
SG-1600
FEATURES

- EVA shell
- Flexible curved plate
- Backside: perforated soft, spongy
- EVA mesh foam
- Adjustable velcro strap
- Removable ankle/EVA achilles pad

BENEFITS

- Great protection, lighter weight
- Takes the shape of the shin
- Increase air flow and ventilation while maintaining its lighter weight
- Keeps guard secure and comfortable
- Use with or without pad

S (7")
M (8")
L (9")
SR MSRP \$34.99


RED/WHITE
(Col.0302)

WALL IV HARD SHELL
SG-2000
FEATURES

- Hard protective polypropylene shell
- Ventilation holes on shell
- Backside: EVA foam
- EVA ankle/achilles protection

BENEFITS

- Great protection, lighter weight
- For maximum breathability
- Light weight, and breathable
- Light, comfortable protection

S (6.7")
M (7.5")
L (8.25")
MSRP \$19.99


CHARCOAL/NEON
ORANGE/BLACK
(Col.0582)

CX II HARD SHELL ELITE
SG-1902
FEATURES

- Ultra durable hard shell
- Backside: sof EVA polyester fabric
- Adjustable wraparound velcro strap
- EVA ankle/achilles protection

BENEFITS

- Great protection, lightweight
- Comfortable, good ventilation
- Keeps guard secure and comfortable
- Light, comfortable protection

XS (6.7")
S (7.5")
M (8.25")
L (9")
SR MSRP \$34.99


BLACK/ROYAL
NEON YELLOW
(Col.010448)

VICTORY IV SOFT SHELL
SG-2001
FEATURES

- Ultra durable soft shell
- Backside: sof EVA polyester fabric
- Adjustable wraparound velcro strap
- EVA ankle/achilles protection

BENEFITS

- Great protection, lightweight
- Comfortable, good ventilation
- Keeps guard secure and comfortable
- Light, comfortable protection

3XS
2XS
XS
S
M
L
XL
SR MSRP \$14.99 | JR MSRP \$13.99


CHARCOAL/
NEON YELLOW
(Col.1200)


EXTREME SHIELD VX II
SG-1980
FEATURES

- Ultra durable clear K-resin shell
- "Arch Stick" shin insert
- Backside: perforated EVA fabric
- EVA ankle/achilles protection

BENEFITS

- Great protection and lightweight
- Excellent shock absorption to impact
- Increase air flow and ventilation,
- Light, comfortable protection

YOUTH (6.5")
JUNIOR (7.5")
SENIOR (9")
SR MSRP \$29.99 | JR MSRP \$29.99


NEON YELLOW/BLACK
(Col.4801)

TOP SLIP HARD SHELL
SG-2005
FEATURES

- High-impact polypropylene shell
- Anatomically shaped, low profile
- Backside: EVA foam

BENEFITS

- Extremely solid protection
- Proper fit, comfortable, light weight
- Increase breathability and ventilation

S (5.5")
M (6.25")
L (7")
MSRP \$9.99



BLACK
(Col.0001)



BLACK
(Col.0001)



WHITE
(Col.0002)


COMPRESSION SLEEVE
AC-0048
FEATURES

- Knitted compression sleeve
- Dry-Form Technology

BENEFITS

- Creates snug fit for guards
- Wicks away sweat from body

JUNIOR (20 cm)
SENIOR (25 cm)
MSRP \$9.99


BLACK/WHITE
(Col.0101)

PREMIERE KNEE-PAD
GK-1609
FEATURES

- High-quality polyester fabric
- Protective padding
- Elastic backing material

BENEFITS

- Durable and comfortable
- Excellent knee protection
- Added comfort and support

S
M
L
XL
MSRP \$24.99


NAVY
(Col.0005)



ROYAL
(Col.0004)



BLACK
(Col.0001)



RED
(Col.0003)



WHITE
(Col.0002)


SHIN GUARD HOLDERS
AC-0049
FEATURES

- Elastic strap
- Strong elastic material
- Velcro closure

BENEFITS

- Holds guard in place
- Durable and keeps shape
- Allows for easy adjustment

ONE SIZE
MSRP \$8.99


BLACK/WHITE
(Col.0101)



WHITE/BLACK
(Col.0121)

KNEE-PAD
GK-0800
FEATURES

- High-quality stretch polyester
- 25mm protective padding
- Elastic backing material

BENEFITS

- Durable, added elasticity, comfortable
- Excellent knee protection
- Added comfort and support

XS
S
M
L
XL
MSRP \$14.99



BLACK/LAVA ORANGE
(Col.1149)



Embossed Foam



Roll Finger | DURO Latex



Hardground Surfaces



BLACK/LAVA ORANGE
(Col.1149)



NEON YELLOW/
BLACK
(Col.0581)



BLACK/BLACK
(Col.0001)



SKIN TECH FPST

EG-1700

FEATURES

- Ultra durable clear K-resin shell
- "Arch Stick" shin insert
- Backside: perforated EVA fabric
- EVA ankle/achilles protection

BENEFITS

- Finger Protective Sticks Technology
- 4 mm Duro Pure German latex
- Roll Finger and Embossed Foam
- Punching zone
- Backhand 3 mm latex
- Elastic wrist with strap

3 · 4 · 5 · 6 · 7 · 8 · 9 · 10 · 11

MSRP \$109.99

SKIN TECH DURO ROLL JR

EG-1705

FEATURES

- Finger Protective Sticks Technology
- 3.5 mm Duro Pure German latex
- Roll Finger and Embossed Foam
- Punching zone
- Backhand 3 mm latex
- Elastic wrist with strap

BENEFITS

- Excellent finger protection
- Great feel and grip
- Durable latex ideal for synthetic/artificial fields
- Additional comfort, grip, control and support
- Cushioning for punching ball

3 · 4 · 5 · 6 · 7 · 8 · 9 · 10 · 11

MSRP \$84.99

SKIN TECH DURO ROLL

EG-1701

FEATURES

- 4 mm Duro Pure German latex
- Roll Finger and special emboss
- Punching zone
- Backhand 3 mm latex
- Elastic wrist with strap

BENEFITS

- Great feel and grip
- Durable latex ideal for synthetic/artificial fields
- Additional comfort, grip, control and support
- Cushioning for punching ball

3 · 4 · 5 · 6 · 7 · 8 · 9 · 10 · 11

MSRP \$99.99

PROFESSIONAL III

EG-1880

FEATURES

- 4 mm Duro Pure German latex
- Roll Finger and special emboss
- Punching zone
- Backhand 3 mm latex
- Elastic wrist with strap

BENEFITS

- Extremely solid protection
- Proper fit, comfortable, lightweight
- Increase breathability and ventilation
- Minimal weight, allows for snug fit

3 · 4 · 5 · 6 · 7 · 8 · 9 · 10 · 11

MSRP \$79.99



WHITE/BLACK/NEON YELLOW/
NEON BLUE/NEON ORANGE
(Col.020199)


LEGEND V FLAT FPST
EG-2040
FEATURES

- Removable Finger Protective Sticks Technology
- 4 mm German latex
- Backhand soft PU coated high foam with nylon mesh
- Side pull-tab
- Elastic wrist with strap

BENEFITS

- Excellent finger protection, all spines removeable
- Great feel, grip and control.
- Additional comfort, durability, and moisture ventilation
- Assists with putting on glove, reduces wear and tear
- Comfortable fit and support

3 • 4 • 5 • 6 • 7 • 8 • 9 • 10 • 11

MSRP **\$49.99**



BLACK/NEON BLUE
(Col.0128)


ULTIMATE V FLAT
EG-2035
FEATURES

- 4 mm German latex
- Backhand soft PU coated high foam with nylon mesh
- Side pull-tab
- Elastic wrist with strap

BENEFITS

- Great feel, grip and control
- Additional comfort, durability, and moisture ventilation
- Assists with putting on glove, reduces wear and tear
- Comfortable fit and support

3 • 4 • 5 • 6 • 7 • 8 • 9 • 10 • 11

MSRP **\$44.99**



NEON PINK/WHITE
(Col.1031)



NEON GREEN/BLACK/WHITE
(Col.1110)



NEON RED/BLACK
(Col.1050)

GOAL FLAT EMBOSSED
EG-1515
FEATURES

- 3 mm Siltex Foam
- Backside in Dull Foam
- Inner lining soft mesh
- Elastic wrist with strap

BENEFITS

- Good feel and grip.
- Comfortable and durable
- Additional venting and breathable
- Comfortable fit and support

3 • 4 • 5 • 6 • 7 • 8 • 9 • 10 • 11

MSRP **\$34.99**

FORCE FLAT III
EG-1720
FEATURES

- 3 mm Latex Foam
- Backside Molded Foam
- Elastic wrist with strap

BENEFITS

- Great feel and grip
- Comfortable and durable
- Comfortable fit and support

3 • 4 • 5 • 6 • 7 • 8 • 9 • 10 • 11

MSRP **\$29.99**



NEON ORANGE/NEON
YELLOW/WHITE
(Col.584802)


FLIP V FLAT
EG-2020
FEATURES

- 3 mm Latex Foam
- Backside Molded Foam
- V-Notch with half-strap

BENEFITS

- Good feel and grip
- Comfortable and durable
- Comfortable fit and support

3 • 4 • 5 • 6 • 7 • 8 • 9 • 10 • 11

MSRP **\$19.99**

REFEREE PACKAGES



NEON YELLOW/BLACK
(Col.0581)



NEON YELLOW/BLACK
(Col.0581)



BLACK/WHITE
(Col.0001)



RED/BLACK
(Col.0141)

AUTHORITY PLUS PACKAGE

PK-2003

Authority Plus Package is available in 3 colors. Package is available in both youth and adult sizes.

INCLUDES

- 1 Authority Plus Jersey
- 1 Authority Plus short
- 1 Pair of Classic Stripe Socks
- 1 Whistle with Neck Lanyard
- 1 Data Wallet

YXS	YS	YM	YL	YXL	
XS	S	M	L	XL	XXL



BLACK/BLACK
(Col.0001)



CAUTION PACKAGE

PK-2004

Caution Package is available in 1 color. Package is available in both youth and adult sizes.

INCLUDES

- 1 Caution Jersey
- 1 Classic short
- 1 Pair of Classic Stripe Socks
- 1 Whistle with Neck Lanyard
- 1 Data Wallet

YXS	YS	YM	YL	YXL	
XS	S	M	L	XL	XXL


 GOLD/BLACK
(Col.0221)

 NEON YELLOW/BLACK
(Col.0581)

 BLACK/WHITE
(Col.0001)

 RED/BLACK
(Col.0141)

 BLACK/BLACK
(Col.0001)

ARBTRITO REFEREE
RF-1700

High-quality referee jersey in sublimation with v-neck for modern look. Premium fitting jersey. Mesh sides for breathability. Bottom and sleeves in piping for premium finish. 2 front pockets.

FABRIC | 100% STRETCH POLYESTER

YXS	YS	YM	YL		
XS	S	M	L	XL	XXL

 MSRP **\$64.99**

 BLACK
(Col.0001)

SUPREME SHORTS
TW-1722

Lightweight fabric. 2 front pocket and 1 back pocket. Very light and comfortable. 7" inseam.

FABRIC | 100% POLYESTER

YXS	YS	YM	YL	YXL	
XS	S	M	L	XL	XXL

 MSRP **\$34.99**
AUTHORITY PLUS JERSEY
RF-1120

Collar with plaque. 2 Pockets with Velcro closure and patch. Mesh on sides. Embroidered logo front and back.

FABRIC | 100% PLAIN POLYESTER WITH MESH

YXS	YS	YM	YL	YXL	
XS	S	M	L	XL	XXL

 MSRP **\$41.99**

 BLACK/WHITE
(Col.0001)

AUTHORITY PLUS
RF-1121

Mesh on sides. 2 side and 2 back pockets with velcro closure. Elastic waistband with cord. 6" inseam. Embroidered logo.

FABRIC | 100% PLAIN POLYESTER WITH MESH

YXS	YS	YM	YL	YXL	
XS	S	M	L	XL	XXL

 MSRP **\$25.99**
CAUTION JERSEY
RF-2000

Round self fabric collar, with 2 front pockets. Round Velcro receptor patch on left pocket. Raglan sleeves with self fabric cuffs.

FABRIC | 100% LIGHTWEIGHT POLYESTER INTERLOCK

YXS	YS	YM	YL	YXL	
XS	S	M	L	XL	XXL

 MSRP **\$35.99**

 BLACK/BLACK/WHITE
(Col.0001)

CLASSIC II SHORTS
RF-1902

2 side pockets and one right back pocket. Elastic waistband with cord. 6" inseam. Embroidered logo.

FABRIC | 100% LIGHTWEIGHT POLYESTER INTERLOCK

YXS	YS	YM	YL	YXL	
XS	S	M	L	XL	XXL

 MSRP **\$24.99**

ICON LEGEND



ADDITIONAL SIZES

Additional sizes have been introduced to this product style.



AIR MATTRESS

Material contains air mattress for additional cushioning upon ball contact.



FINGER PROTECTIVE STICKS TECHNOLOGY

Protective flexible sticks placed behind fingers to create a resistance of fingers bending backward upon impact of player or ball. Additional cushioning foam placed around the Finger Protective sticks to avoid discomfort caused from pressure on backhand.



NEW PRODUCT

Product is a New Development to the collection.



DRY-FORM TECHNOLOGY

Fabric that has been specially treated to control moisture created from the body for optimum player comfort.



FUZIONSEAM® TECHNOLOGY

FuzionSeam® Technology constructed in Sealed Seams to avoid water absorption.



GERMAN LATEX

Glove construction made from high quality German latex foam.



NEW COLORS

Additional colors have been introduced to this product style.



NEW FITTING

New fitted product.



GUARANTEE 2 YEARS

Product quality is guaranteed for 2 years.



GRIP TECHNOLOGY

Soft texture, supple micro-fiber create better 1st touch control.



UNTIL QUANTITIES LAST

The product is available with limited quantities.



ELEMENT GEAR COMPRESSION

Engineered clothing with moisture-wicking performance fibers to help athletes keep cool, warm and dry.



LEAD-FREE INK

Materials are free from lead carcinogens in the ink used to dye them for safety and protection.



PSGS

Elettos's PREMIER SOFT GRIP SYSTEM (PSGS) is a new technology developed for GK gloves. It assures top quality grip and great fitting for Goalkeepers to assure great performance.



BENEFITS

Explains the features and benefits of the product.



SLIM FIT

Product is made in a slim fit cut for professional fitting look.



DEEP-PENETRATING INK

Materials are free from lead carcinogens in the ink used to dye them for safety and protection.



DURO LATEX

Glove latex made in more durable construction for longer durability yet still keeping its excellent softness and grip.



AGILITY PERFORMANCE TRAINING

Equipment that allows you to react and change directions at speed.



LOOSE FIT

Product is made in a looser fit in comparison to the other models in the Elettos Sport collection.



BUTYL BLADDER

Soccer ball is constructed using a butyl bladder for excellent air retention.



LEATHER

Upper of shoe is made of leather material for additional comfort and precise fit.



SKILLS TRAINING

Helps serious athletes prepare for game day with top of the line training equipment.



MESH VENTING SYSTEM

Specifically placed mesh vents to maximize ventilation during performance.



PVC FREE

Materials are free from polyvinyl chloride making it safer for babies and children.



NEW FITTING SHOE

Shoe size scale is made one size smaller than previous collection.



SPEED TRAINING

Dominate the competition with speed training equipment from ELETTO.



TIGHT FIT

Product is made in a more fitted design in comparison to the other models in the Elettos Sport collection.



SOFT TOUCH

Soccer ball is manufactured with EVA foam backing construction in order to provide a soft ball contact.



SIZES XXXS

Junior sizes are available in 3XS.



ENGINEERED MESH

Engineered mesh in visible holes for maximum ventilation for professional elite jerseys.



UV PROTECTION

Fabric features block most of the Ultra Violet Rays.



GUARANTEE 1 YEAR

Product quality is guaranteed for 1 year.



REMOVABLE ANKLE

Product feature that allows the pad to be used with and without ankle guard. Easy to attach and detach with velcro.



BOOK PROGRAM

These are non stock items and minimum quantities are required. All products have different minimums. Please contact us for more details.

TERMS AND CONDITIONS

Submission of an order for goods to Logica Sport (Eletto) is regarded as an acceptance of the terms and conditions of Logica Sport as outlined below. There will be absolutely no resale of footwear, apparel or accessories purchased from Logica Sport without express written authorization.

TERMS OF SALE

Terms of sale are subject to change on 30 days written notification.

PRICING POLICY

Prices are subject to change without notice. Prices will be invoiced as stated on the order which has been accepted by Logica Sport

GST

The wholesale pricing and suggested retail pricing in the catalogue are net of Goods and Service Tax. The GST at the prevailing rate will be added to the bottom of the invoice as a charge for the total value of the invoice including freight/postage where applicable.

PAYMENT TERMS

All invoices are due for payment within 30 days of the invoice date unless otherwise agreed upon in writing. Custom items or personalization require deposit and may require different terms

CREDIT APPROVAL

All orders are subject to acceptance and approval prior to shipment. Customers shall be liable to pay all service charges and any collection costs incurred by Logica Sport to collect amounts due.

SERVICE CHARGES

A service charge of 1.5% per month (18% per annum) will be applied to account balance past due.

SHIPPING POLICY

Logica Sport will attempt to ship all orders on requested shipping dates, however, should situations result in delay or non-delivery, Logica Sport will not be held liable.

FREIGHT POLICY

All regular and booking orders will be shipped F.O.B. Logica distribution centre, buyer's risk in transit and will be shipped via means determined by Logica unless otherwise specified by the customer.

BACK ORDERS

All backorders over 90 days will be returned to Logica's representative to be revised with the customer.

SHORTAGES AND OTHER IRREGULARITIES

A notation of outer carton damage and/or removal/replacement of the tamper-proof tape must be made on the signed pro bill at the time of delivery and reported to the carrier and Logica in writing within 5 days of the received date. Any shortage of irregularity or dissatisfaction regarding the quantity shipped, discounts or conditions of sale must be reported to Logica office within 10 days of receipt. Failure to do so will constitute complete customer acceptance of the order as shipped and invoiced.

SECONDS OR REJECTS

Any item purchased as a second or reject does not carry any warranty for workmanship and materials and is sold as is. Concerning such items, none of the trademarks may be used in any advertising or promotional publicity.

PROCEDURES AND CONDITIONS TO RETURN GOODS

1. Contact a Customer Service Representative at Logica's Customer Service Centre – Toll free: 877-756-4422
2. The Customer Service Representative will discuss the situation with the customer and provide a return authorization number (RMA) to authorize returns.
3. All goods authorized for return must be shipped back to the Logica warehouse freight PREPAID to the destination.
4. Write the Return Authorization number on the outside of all cartons/packages returned.
5. Merchandise for return must be in original packaging, free of all price stickers and in resalable condition.
6. Non-resalable merchandise may not be returned to Logica unless defective.
7. Discontinued merchandise may not be returned.
8. Merchandise returned will be subject to a 25% restocking charge if tickets, price tags or other markings are on product.
9. Merchandise returned in excess of that authorized by Customer Service, will remain at the risk of the Customer, and will be returned to the Customer, freight collect.

CONSUMER WARRANTY AND DEALER REPLACEMENT POLICY

Logica products are warranted only to direct commercial customers against manufacturing defects in workmanship and material under normal use and maintenance. Logica reserves the right to inspect products alleged to be defective for evidence of misuse or abuse and determine whether in Logica sole determination a repair or replacement, if any, of the defective product is due. The liability of Logica's under this warranty shall be limited to repair or replacement. In no event shall Logica be liable for special incidental or consequential damages whatsoever. Seller has made no other representations or warranties, expressed or implied, as to any matter whatsoever, and there are no implied warranties of merchantability or fitness for a particular purpose.

RETAIL PRICES

All retail prices set forth in this catalogue are suggested prices.

DIVERSION OF MERCHANDISE

To enhance informed selection and promote product image, Logica only sells to selected retail outlets which may not resell to any person or entity who is not also the final user or consumer. The resale trans-shipment or any form of diversion of Logica product to anyone other than the final consumer is expressly prohibited. Such activity may subject the violator to termination of relationship with Logica and constitutes a breach of the contract of sale for which Logica may seek the appropriate legal remedies, including monetary damages or injunctive relief. Under such circumstances Logica also reserves the right to cancel orders previously accepted and to require the return, at such re-seller's expense, of any diverted merchandise.

SELLING OF PRODUCT

Retailer is authorized to sell Logica products from its established, permanent retail outlet(s) only. The sale of Logica products through the mail, by catalogue, by temporary or transient retail locations, through any electronic means (including the internet and/or on-line) or by any means other than at an established, permanent retail outlet, must be pre-authorized in writing by Logica Sport.

ADVERTISING

All use of Logica trademarks and images must be submitted to Logica for final approval.

CANADA

12060 Albert-Hudon
Montreal, Quebec H1G 3K7
Toll Free: 1.877.5ELETTO (1.877.535.3886)

USA

1197 Main Street
Champlain, NY 12919
Toll Free: 1.855.870.3434

www.elettosport.com
info@elettosport.com

